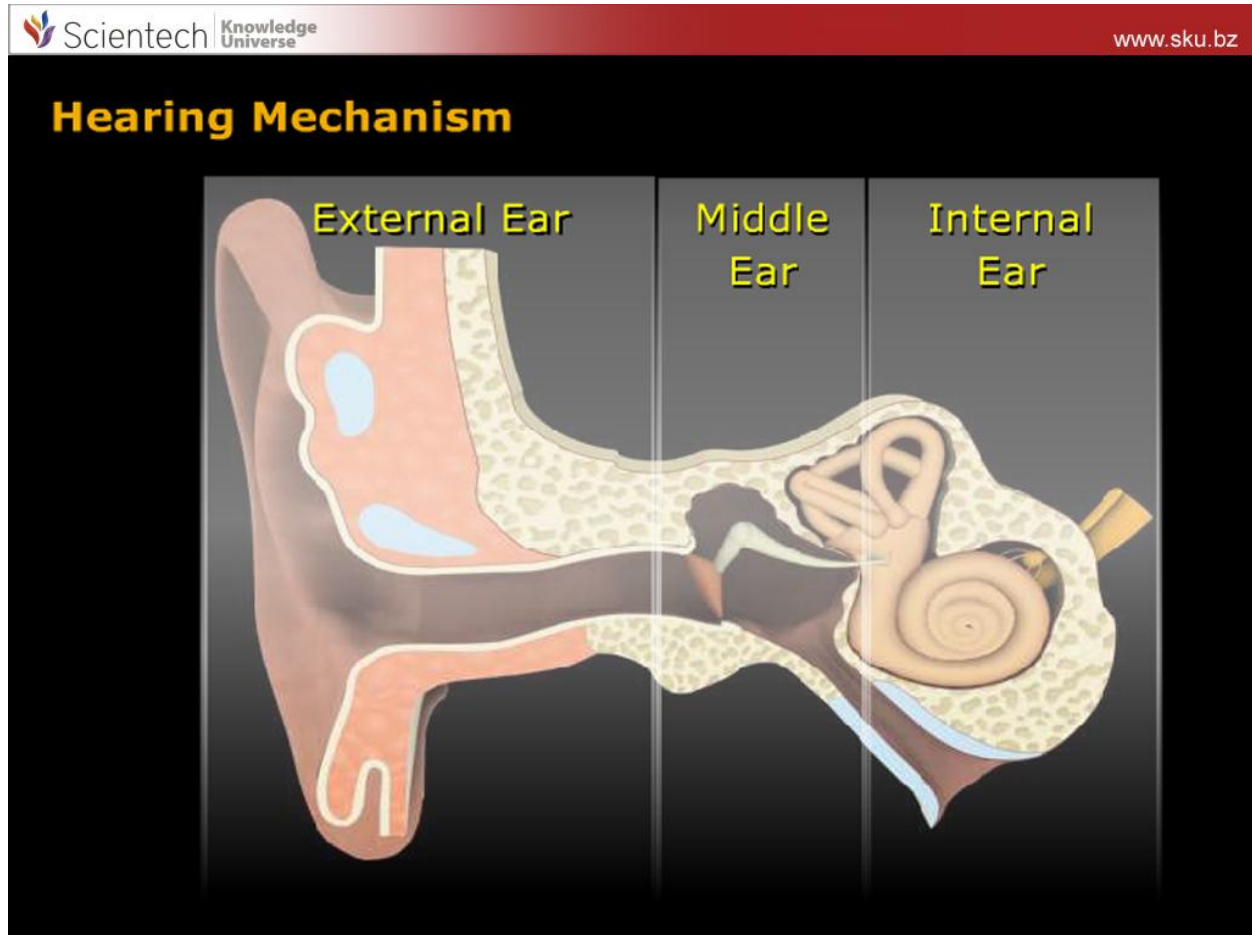


SKU-Human Physiology-II

SKU-Human Physiology is the biological study of the functions of living organisms and their Parts. Here Human Physiology is covered in two parts. This part describes some of the biological systems with the help of various Images, Creative Animations and User interface Simulations. Learning theoretical topics with help of these interactive methods provide Ease and Quality in Learning. Every Unit ends up with Interesting FAQ's and Quizzes.



Topics covered in SKU-Human Physiology-II:

Nervous System

Topics Covered: Introduction to Nervous System, Classification, Central Nervous System (CNS), Human Brain, Brain parts their functions and properties, Cerebrospinal Fluid (CSF) its composition and function. Spinal cord its structure and functions. Generation of Action Potential, Conduction and Transmission of Nerve signals in humans. Peripheral Nervous System (PNS), Autonomic Nervous System (ANS).

Sense Organ

Topics Covered: Eyes, Mechanism of Vision, Color Vision. Ears, Mechanism of Hearing, Test of Hearing, Audimetry. Nose, Mechanism of Olfaction. Skin and Tongue.

Endocrine System

Topics Covered: Endocrine Glands, Hormonal Secretion and their Effect. Reproductive system: Functions of Male Reproduction System, Female Reproduction Organs and Contraception.

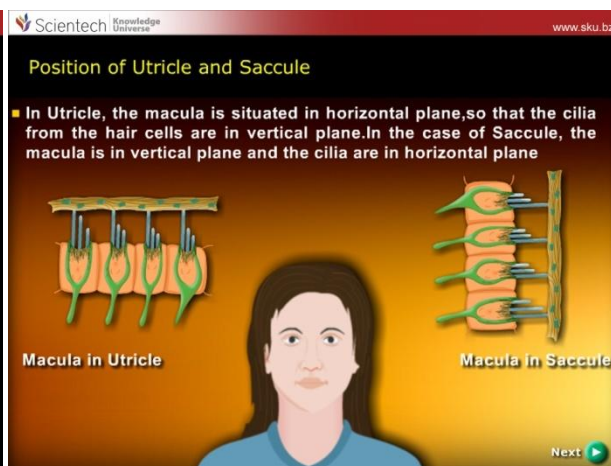
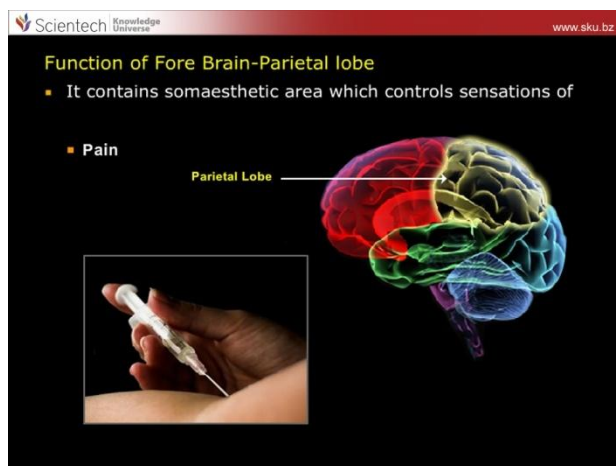
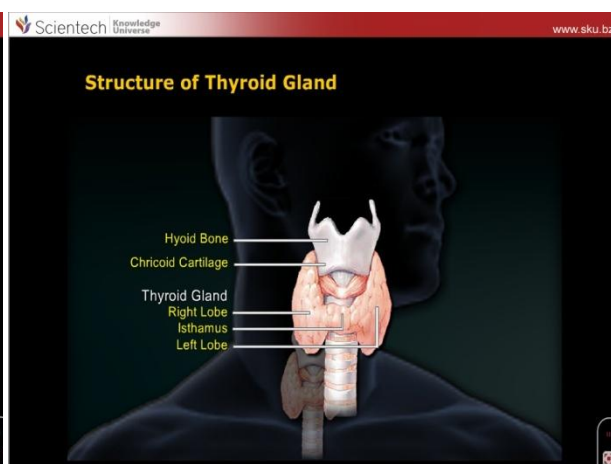
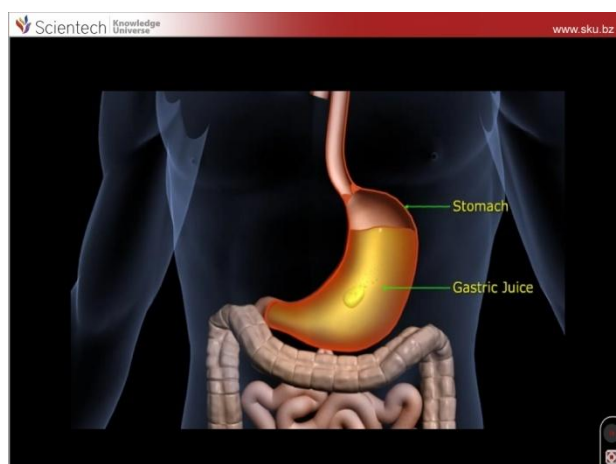
Digestive System

Topics Covered: Salivary, Gastric and Intestinal digestion and motility of Gastrointestinal Tract. Basic principles of Metabolism and Nutrition. Enzymes Classification and mode of action. Factors influencing the Enzyme Action.

Bio-Chemistry

Topics Covered: Water and electrolytes, Brief description, Acid Base Balance, Electrophoresis, Flame Photometry, Densitometry, Colorimetry & P^H Metry.

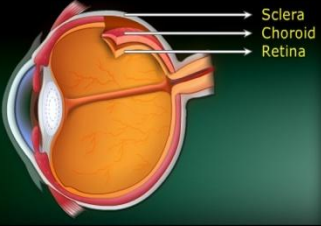
Print Shots of SKU-Human Physiology-II



Scienteck Knowledge Universe www.sku.bz

Walls of Eye Ball
Walls of the eye comprises of three layers

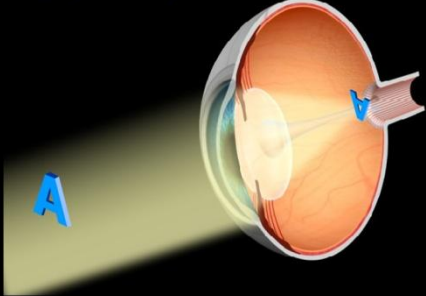
- Outer Sclerotic Layer
- Middle Choroid Layer
- Inner Retina Layer



A cross-sectional diagram of the eye wall. Three arrows point from the text labels to the corresponding layers: the outermost white layer (Sclera), the middle reddish layer (Choroid), and the innermost thin layer (Retina).

Scienteck Knowledge Universe www.sku.bz

Focusing of an Image



A diagram illustrating the focusing of an image. A blue letter 'A' is shown on the left, with a beam of light passing through the eye's lens and converging to form a sharp image of 'A' on the retina. A blue arrow points to the focal point on the retina.